

# Your Community

The official newsletter of the R.M. of East St. Paul

December 2024

For more information, call: 204-668-8112

Online: [www.eaststpaul.com](http://www.eaststpaul.com)

Email: [info@eaststpaul.com](mailto:info@eaststpaul.com)

Office: 1 - 3021 Birds Hill Rd. 8:30 a.m. to 4:30 p.m.

## Fire prevention tips and other info

With the start of the winter season, the members of your East St. Paul Department would like to provide some tips to our residents to help prevent fires. We are also providing some other general information to make you and your family safer.

- If you have an attached garage, do not plug your vehicle in to use the engine block heater. The temperature in most attached garages is not cold enough to require the use of an engine block heater. Faulty engine block heaters and faulty extension cords are a leading cause of garage fires in the winter months. Wind chill does not affect a vehicle. If a vehicle starts on fire within the attached garage, it may be some time before the occupants become aware of a fire.

- It is recommended that you install a heat detector in your attached garage. Just a note that in Manitoba, all new residential construction occurring after October 1st, 2008 must have a heat detector in an attached garage wired into the house smoke alarm system. If your residence was constructed prior to this date and you are considering renovations to the attached garage area, consider the installation of a heat detector.

- With the increased use of furnaces in the winter, make sure you have working carbon monoxide detectors on each level of your residence. Ideally one should be placed outside your bedroom. Carbon monoxide (CO) is odourless and colourless. It can cause significant health issues and even death if undetected. Test your detectors on a weekly basis. Purchase CO detectors that can be plugged into a wall outlet with battery backup. Detectors should be replaced after 10 years use. Refer to the manufacturers guidelines for further information.

- Many residences have high efficiency furnaces. It is important to keep the outside furnace flue vent clear of drifting snow. If the vent becomes obstructed with snow, it can lead to a buildup of carbon monoxide within the residence. This often triggers the CO alarm.

- Extension cords are designed for use as a temporary measure. If you are going to use an extension cord, do not cover it with rugs or other flammable

material. Covered extension cords will overheat and short out causing a fire hazard.

- Use portable space heaters safely. Make sure they are at least three feet away from anything that can burn and on a flat surface. Space heaters should have a thermostat with overheat protection and auto shut off if it accidentally tips over. Do not use space heaters in areas that may come in contact with water. If you are leaving your residence, make sure you turn your space heater off. Refer to the manufacturer's instructions for further details.

- Fireplaces are mostly designed for decorative purposes. Do not burn paper or products other than dry seasoned wood. Prior to using your fireplace, it should be cleaned and inspected by a qualified person on an annual basis. Burn only a few logs at a time and make sure your fire is contained within the fireplace. Use a screen to prevent embers from popping out onto the floor.

- If you are using candles, make sure they are fully extinguished prior to leaving your residence or going to bed.

- Make sure your addresses are visible from the street.

- Icy roads and packed snow lead to many vehicle collisions. If you are planning on driving during inclement weather, consider leaving earlier to give yourself more time. Remember that the posted speed limit is designed for ideal conditions that exist on dry summer days. Reduce your speed and drive to the conditions of the roadway. ABS brakes do not reduce your stopping distance. They are designed to prevent your tires from locking up and allowing you to steer around obstructions.

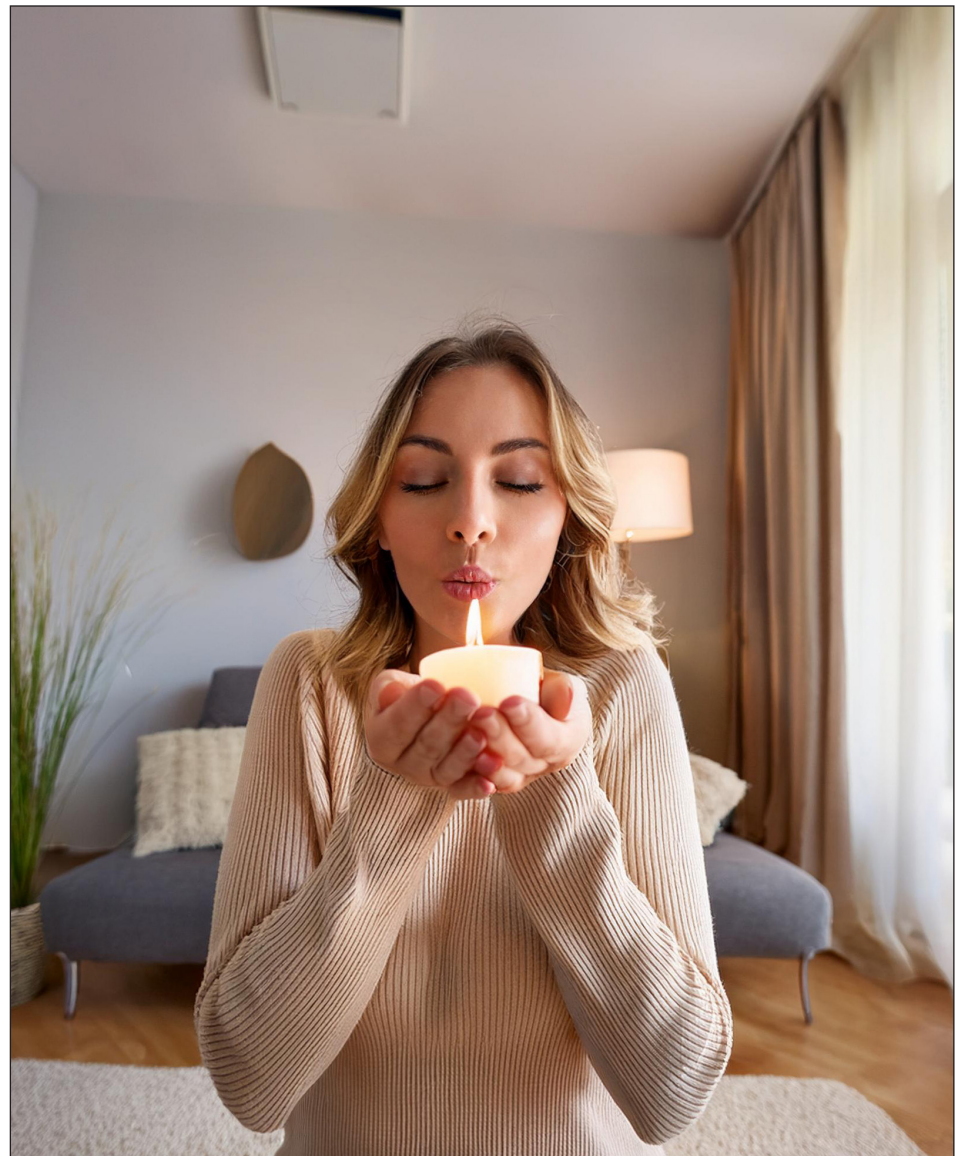
- Please do not drink and drive. Please do not use drugs and drive.

If you have any questions regarding fire prevention or other fire related concerns, contact the fire department via email at [fire.department@eaststpaul.com](mailto:fire.department@eaststpaul.com).

**Thank you  
Your East St. Paul  
Fire Department**



**Make sure your smoke and carbon monoxide detectors are working, and if you burn candles in your home, make sure they're out before you go to bed or leave your house.**



**SIGN UP FOR e-blasts at [eaststpaul.com](http://eaststpaul.com)**



# Stay safe on winter roads

East St. Paul's Community Safety Services Department wants everyone to stay safe on the roads this winter and is offering these MPI tips to help keep you and your vehicle on the road when ice and snow make driving a little tricky.

### Speed and slippery roads

In winter, traction is reduced affecting your ability to get out of snow, make a turn or stop. As a general rule, stopping distance is doubled on wet pavement, tripled on packed snow, and up to 10 times longer on an icy road. Ice on roads at -1C is twice as slippery as ice at -18C.

### Slow down

Slowing down will maintain

traction and decrease your total stopping distance. Posted speed limits are the maximum recommended speed for ideal conditions only.

### Leave earlier

Avoid the temptation to drive too fast for conditions by giving yourself extra travel time.

### Winter tires

Using winter tires increases traction, making it easier to get out of the snow and can cut stopping distance by 25 per cent or more.

### Clear snow and ice

Before you drive, clear snow and ice from your vehicle and be sure you can see through your windshield, windows and mir-



There are several things you can do to stay safe on winter roads, including slowing down and giving yourself ample time to get to your destination.

rors. Make sure your light covers are clear and remember to clear snow off the hood to prevent snow flying onto vehicles behind you.

### Emergency supplies

Keep a cold-weather survival

kit in your vehicle. Include a candle and matches, water, non-perishable food, a first aid kit, flares or reflectors, booster cables and a shovel, an ice scraper, warm clothes, boots and blankets.

# Removal of DED trees starts this month

Voluntary Authorization of Access forms will be delivered to East St. Paul property owners that have had trees with Dutch Elm Disease identified on their property. Trees are marked with orange paint and are tagged.

Removal of all marked trees is scheduled to begin in early December and will take approximately six weeks to complete, dependent on weather.

The RM has contracted Green Drop Ltd. to remove the diseased trees and a representative will be going door-to-door to deliver the

authorization forms. If you are home at the time of delivery, the representative can answer quick questions, and you can sign the form and return it to them. If no one is home, they will leave the form in the mailbox or door, to be signed and returned via mail or email to Green Drop Ltd.

A total of 171 trees with Dutch Elm Disease were identified and marked this summer in East St. Paul by the Province of Manitoba's Department of Sustainable Development employees. There is no cure for Dutch Elm Disease,

and the trees must be removed, as authorized under the Forest Health Protection Act. (C.C.S.M., c. F151)

Inquiries can be directed to Green Drop Tree Care:

- Phone: 1-833-928-8733
- Email: trees@greendrop.com

### Dutch Elm Disease Facts

Dutch Elm Disease is a fungal disease that blocks water movement in elm trees and eventually leads to the death of the entire tree. A dead or dying elm attracts elm bark beetles, which breed underneath the bark of the tree. When the beetle leaves the tree, it will be contaminated with the spores of the fungus and spread them to other elms.

A tree that is infected with Dutch Elm Disease may produce sparse leaves in the spring. In

early summer, there will be a sudden wilting of the leaves, usually at the top of the tree. In late summer, the leaves may become yellow and fall prematurely.

There is no cure for Dutch Elm Disease; prevention and removal of dead and dying trees is the only way to stop the spread of the disease.

You can help prevent Dutch Elm Disease by watering and fertilizing your elm to keep it healthy; pruning dead or dying branches immediately (The Forest Health Protection Act prohibits pruning between April 1 and July 31); doing a basal spray to the lower 50 cm of elm trees in the late summer, early fall; having a licensed injection specialist do a therapeutic injection; and control elm bark beetles and cankerworms with a tangle foot band.

**COMMUNITY CHRISTMAS HAMPER PROGRAM 2024**

**DONATE:**

- NEW TOYS
- GIFT CARDS
- CASH
- GROCERIES

**HELP TO:**

- WRAP
- PACK

**SHOW YOUR CARING SPIRIT**

Please consider helping us to reach our goal of providing Christmas Cheer to those less fortunate.

AREAS SERVED: North of the Winnipeg perimeter highway\*  
(\*excluding the towns: Selkirk and Beausejour)

**Facilitated by Abundant Life Lutheran Church**

**DONATION DEADLINE: MONDAY 9 DECEMBER 2024**

**Donations can be dropped off at Abundant Life Lutheran Church on Monday, December 9 between 12:00 pm - 4:00 pm**

Christmas Hamper phone line: 431-323-2555  
Note: Phone line open from 9:00 am - 5:00 pm Monday - Saturday

email: communitychristmashamper@gmail.com  
Please email us or call the number above

If you are in need of a hamper outside of the cities of Selkirk, Beausejour or Winnipeg, please call the Hamper Line of Abundant Life Lutheran Church at 431-323-2555  
Note: Phone line open from 9:00 am - 5:00 pm Monday - Saturday

**ABUNDANT LIFE LUTHERAN CHURCH**  
A congregation of Spirit of Life Ministry

**JOIN US FOR WORSHIP SUNDAYS AT 11:15 AM**  
3486 Raleigh St. • East St. Paul, MB • R2E 1B9 • www.spiritoflifeministry.ca/all-home

**Santa IS Coming**

Skate with Santa  
Sunday December 22, 2024 12:15PM-1:45PM  
East St. Paul Arena - 266 Hoddinott rd.

SIGN UP FOR e-blasts at eaststpaul.com



# Vacation Home Patrol Program offers security while you're away

East St. Paul's Community Safety Services now offers a Vacation Home Patrol Program.

Under the program, residents of the municipality can apply to have the RM's Community Safety Officers (CSO) conduct exterior patrols of their residential property while they are away on vacation for a period of six days to one month. The service is free of charge and open only to residents of the municipality.

The service is offered by many police services across the country, and it adds an additional layer of security so that residents can enjoy their time away from home.

All residents need to do is submit an application – available online at [eaststpaul.com](http://eaststpaul.com) – a minimum of seven days prior to their vacation departure date.

During routine patrols, the CSOs will go to your residence and do an exterior check to ensure the residence and detached structures are secure.

Residents are reminded that

the Vacation Home Patrol Program does not replace any requirements of your home insurance, it is simply to ensure that if your home is broken into while you are away, it will be secured by the CSOs and RCMP.

When you fill out the application you will be required to provide the following information:

- Travel dates
- Name, address, and phone number
- Whether there will be any cars outside the residence while they are away (include make, model, and license number)
- Whether there will be exterior lights on and if so, what times
- Who has permission to enter the residence while they are away (i.e., pet feeders, water plants, etc.)
- An emergency contact name and number and any other information you feel is important

To apply for the Vacation Home Patrol Program or for more information, go to [eaststpaul.com/p/](http://eaststpaul.com/p/)

community-safety.

Once an application is submitted, the Protective Services Coordinator will review to ensure it meets the criteria and will contact the applicant.

Also, visit the East St. Paul Community Safety Services Facebook page. The page is dedicated to keeping the East St. Paul community up to date on all things related to safety within our municipality. Here, you'll find important announcements, safety tips, updates on local law enforcement activities, community event information, and much more. Our goal is to keep you informed and engaged, ensuring that East St. Paul remains a safe and welcoming place for everyone. Stay connected and stay safe!

<https://www.facebook.com/profile.php?id=61564328072287>

## Crime Prevention Tips

Ensure your home appears occupied by using timers to activate lights and radios at varying times.

Avoid publicizing your travel plans, but inform trusted neighbors so they can keep an eye out.

Provide a spare key and emergency contact number to neighbours for added security.

Arrange for daily pickup of mail and newspapers or halt deliveries while you're away.

Lower the volume of your telephone ringer to avoid drawing attention to unanswered calls.

Keep blinds adjusted as usual to maintain a lived-in appearance.

Secure all entry points, including garages, sheds, and gates; consider disconnecting garage door openers.

Request neighbours to park in your driveway occasionally and place out garbage cans on collection days.

## 72 hours: Is your family prepared?

If an emergency happens in your community, it may take emergency workers some time to reach you. You should be prepared to take care of yourself and your family for a minimum of 72 hours. The East St. Paul Emergency Preparedness Committee would like to provide residents with the information to help you create your kit.

Your kit should be assembled well in advance of an emergency as you may only have minutes to collect essentials. Your kit should be in a container that is durable and easy to carry such as a duffel bag or suitcase with wheels. Keep your kit in an easily accessible location and tell all members of your household where the kit is located.

### Your basic kit should include:

- Water (2 litres per person per day)
- Food (that will not go bad such as canned food, energy bars and dried food. Replace food and water on a regular basis throughout the year)
- Manual can opener
- Flashlight and batteries
- Radio (battery-powered or wind up)
- Extra batteries
- First aid kit
- Special needs items
- Prescription medication for all family members
- Infant formula and diapers
- Equipment for people with disabilities
- Pet food, extra water for pets as well as any other items your pet may need

- Extra keys for your home and vehicle
- Cash including small bills and change

### Additional supplies to consider:

- Two additional litres of water per person per day
- Sleeping bag or warm blanket for each person
- Complete change of clothes including shirt, pants and sturdy shoes
- Candles and matches in a waterproof container
- Paper and pencil
- Whistle
- Books, games, playing cards, puzzles or other activities for children
- Toiletries, hand sanitizer, toilet paper
- Utensils, garbage bags
- Household chlorine bleach or water purification tablets/drops
- Basic tools (hammer, pliers, screwdriver, work gloves, pocketknife)
- Duct tape
- Small fuel-operated stove and fuel
- Important family documents such as copies of insurance policies, identification, bank account records.

You should also consider packing a spare cell phone charger in case you have access to a power source such as your vehicle battery.

If you need further information, please contact the administration office at 204-668-8112



RM OF EAST ST. PAUL

# HOLIDAY AT THE PLAZA & SANTA PARADE

**SATURDAY DECEMBER 14**

3021 BIRDS HILL RD

**SANTA PARADE 4PM-5:30PM**  
Parade route to be released soon!

**PLAZA HIGHLIGHTS 5PM-7PM**  
Santa Claus Photo Booth  
Special Visit from **OLAF**  
Tree Lighting  
Delicious Hot Chocolate & Coffee & More

**HO-HO-HOPE TO SEE YOU THERE!**

[WWW.EASTSTPAUL.COM](http://WWW.EASTSTPAUL.COM)



**SIGN UP FOR e-blasts at [eaststpaul.com](http://eaststpaul.com)**



# Councillor Corner

Brian Duval - Ward 3

Much has been said and written, including in this column, about Bill 37 and its stated legislation including Plan 20-50. To briefly recap, Bill 37 was passed into law in 2021 and called for the formation of a new capital planning region with mandatory membership of the 18 municipalities around and including the City of Winnipeg. It also created a new appeal process available to developers to be used at their discretion.

Bill 37 also called for the creation and adoption of a master development plan incorporating those 18 member municipalities. This master plan came to be known as Plan 20-50, and the first draft was introduced in late 2021. Bill 37 stipulates a final adoption deadline of Jan. 1, 2025.

Both documents, Bill 37 and Plan 20-50, were met with serious concerns and objections from the outset from most of the member municipalities. Subsequent draft versions were not successful in alleviating the concerns.

In a very recent development on the issue, the current provincial government has stated their intention to amend Bill 37 such that mandatory participation by individual municipalities will no longer be required. Furthermore, the amendment will call for a new master plan by Jan. 1, 2027. There will be a process for municipalities to opt out, and your council will make a decision on this option only after full review of the details of the amendment and its enactment into law.

We thank everyone who attended the recent presentation and subsequent Question & Answer session on the proposed idea of a Secondary Plan for the area east of Highway 59 and north of the Perimeter Highway. This area is situated in the extreme south-east corner of our Municipality. Secondary Plans are commonly used by many municipalities to control devel-



opment in specific areas with unique features. Such features might be geographical, ie lakes, hillsides etc., or Federal/Provincial/Utility right-of-ways, or even simply to establish a new village or town site. It would be fair to say Birds Hill Village was created by some type of Secondary Plan, although the terminology was likely different a hundred years ago.

In this case the main purpose is to prevent ad hoc, uncoordinated and poorly planned developments. In the past few years your council has rejected three successive, unacceptable development proposals of a large tract of land within this area. We have reason to believe that if another such proposal comes forward, our decision to reject it will be overturned by the Municipal Board. The creation and formal adoption of a Secondary Plan all but prevents such from happening.

On a lighter note, the Christmas season is upon us. I'd like to commend the many, many residents who have adorned their properties with lights and decorations. I urge everyone to take a leisurely drive through our neighbourhoods and enjoy the sights, and especially Hoddnott's fabulous candy cane lane.

On behalf of Mayor and Council I wish everyone a Merry Christmas and a healthy, Happy New Year.



Congratulations to the U13 A2 Royals who won the East Selkirk tournament for the second year in a row. Many of the players are from East St. Paul as is coach Dale Weise (former NHL'er) was featured in the neighbourhood magazine last month. Back row, left to right, Trysten Fenn-Bennett, Chael Obirek, Hunter Weise, Eli Bebek, Carter Dixon, Dillon Penner, Colton Greig, Ethan Birk, Tavin Olivier. Front Row, Simon Haugen, Carter Rotinsky, Ashton Lucas, Jacob Mikula, Owen Chodak. Coaches: Assistant: Justin Olivier, Assistant: Reed Langlois, Head: Dale Weise.

**RM OF EAST ST. PAUL**

## WINTER BREAK WORKSHOPS

Looking for a way to keep the kids busy this Winter Break?  
Visit our website [www.eaststpaul.com](http://www.eaststpaul.com) for full details.

**REGISTRATION OPENS 9AM NOVEMBER 7 AT  
WWW.EASTSTPAUL.COM**

<b>DEC. 23</b> BEADS, CHARMS & KEYCHAIN WORKSHOP	<b>DEC. 27</b> NINJA WARRIOR COURSE
<b>DEC. 30</b> BREAK DANCING & GRAFFITI LETTERING ART	<b>JAN. 2</b> NERF BLASTER PARTY
	<b>JAN. 3</b> MAD SCIENCE WORKSHOP

**RM OF EAST ST. PAUL**

## WINTER 2025 PROGRAMS & WORKSHOPS

# REGISTER NOW

Pre School Dance / Martial Arts  
Mat Pilates / Wine Bottle Painting /  
Kids Chocolate Workshop & more to come

Pickleball registration opens December 2, 2024

Visit [www.eaststpaul.com](http://www.eaststpaul.com)  
for more information

**RM OF EAST ST. PAUL**

**The RM offices will be closed at noon on December 24 and will remain closed until January 1.**  
We will open again Jan.2.

Supplemental Property Taxes are due December 31 but residents can make payments using one of the following options:

- Cheque via our Drop-off box (located near the front doors at the RM Administration Office at 3021 Birds Hill Road)
- Online banking
- E-transfer to [administration@eaststpaul.com](mailto:administration@eaststpaul.com)

No residential curbside pick-up for Garbage & Recycling will occur on Dec.25 or Jan.1.